

# Finals Masterclass

## Day 1: OSCE Masterclass

## Day 2: UK Best Practice SBA Masterclass

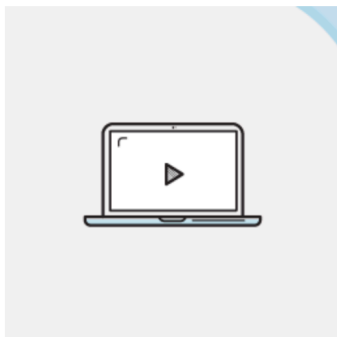
*This is an online course. See p2 for OSCE stations & p3-5 for all Clinical Guidelines covered.*

### Day 1: OSCE Masterclass

08:30 - 08:45	Registration
08:45 - 09:55	Cardiovascular
09:55 - 11:05	Abdominal (medical)
11:05 - 11:10	MDU Talk
11:15 - 12:15	Respiratory
	LUNCH BREAK
13:00 - 14:00	Neurological
14:05 - 15:15	General surgery
	BREAK
15:30 - 16:20	Joints & skin
16:20 - 17:30	Emergency management

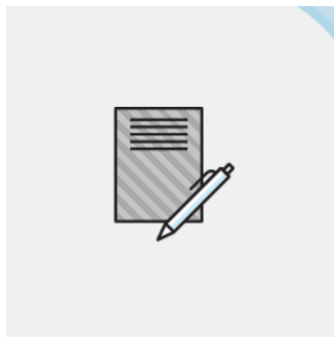
### Day 2: SBA Masterclass

08:50 - 09:50	Gen Surgery and Renal/Urology
09:55 - 10:35	Ophthalmology and ENT
10:45 - 11:45	Ortho, Rheum, Anaesthetics and Pain
11:45 - 13:00	Cardiovascular and Resp
	LUNCH BREAK
13:45 - 14:55	GI and GP
15:05 - 15:45	Derm, MoE, Palliative
	BREAK
16:00 - 17:10	Endo, Neuro and Neurosurgery
17:15 - 18:15	Haem, Emergency Medicine
18:15 - 18:45	GUM, Infectious Diseases



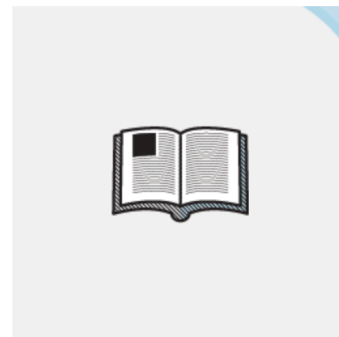
20h of online tutorials

1yr access to Rewind and Re-watch



1100 Exam SBAs

Consolidate your knowledge with hundreds of questions online



110 and 70-page  
Textbooks

Digestible and revision friendly colour textbook posted directly to you

# Day 1: OSCE Stations Covered

## Cardiovascular

- Aortic stenosis
- Aortic sclerosis
- Mitral regurgitation
- Valve replacement
- Congestive cardiac failure
- Coronary artery bypass grafting

## Abdominal (Medical)

- Chronic liver disease ± transplant
- Hepato-/spleno-megaly
- Renal transplant
- Inflammatory bowel disease
- Reno-megaly

## Respiratory

- Chronic obstructive pulmonary disease
- Pulmonary fibrosis
- Old tuberculosis
- Cystic fibrosis
- Bronchiectasis
- Pleural effusion

## Neurological

- Post-stroke (hemiplegia)
- Parkinsonism
- Cerebellar syndrome
- Multiple sclerosis
- Facial nerve palsy
- Motor neurone disease

## General Surgery

- Inguinal hernia
- Peripheral vascular (arterial) disease
- Goitre
- Incisional hernia
- Diabetic foot
- Chronic venous insufficiency

## Joint and Skin

- Rheumatoid arthritis
- Psoriatic arthritis

## Emergency Management

- Sepsis
- GI bleed
- anaphylaxis
- MI
- Respiratory failure

## Day 2: UK Best Practice + SBA Guidelines covered

### Topic

### Guideline

#### Cardiology

- 1 **Atrial Fibrillation** NICE CG180, NICE CKS - Oral Anticoagulation
- 2 **Chronic Heart Failure** NICE NG106 [2018], American Heart Association
- 3 **Acute Coronary Syndrome** NICE CG94/ CG167
- 4 **Hypertension** NICE NG136

#### Respiratory

- 5 **Pneumothorax** BTS: Pleural Disease
- 6 **COPD & Pulmonary Hypertension** NICE NG115: COPD in over 16's: Diagnosis and Management
- 7 **Lung Cancer** NICE Guideline NG122, RCEM Hypercalcaemia
- 8 **Pulmonary Embolism** NICE NG 158, VTE diagnosis, treatment and thrombophilia testing

#### Gastroenterology

- 9 **Enteropathy** NICE NG20 Coeliac Disease: Recognition, Assessment and Management; UpToDate Coeliac
- 10 **Inflammatory Bowel Disease** NICE NG130: Ulcerative Colitis - Management; UpToDate: Ulcerative Colitis
- 11 **Decompensated Liver Disease** NICE CG100 - Management of Alcohol-Related Liver Disease; NICE CKS - Cirrhosis
- 12 **Hepatitis** UpToDate Hepatitis B, UpTo Date Hepatitis C, NICE CG165 and NICE CKS Hepatitis C

#### General Surgery

- 13 **Gallstones** NICE CG188 / BMJ Best Practice
- 14 **Colorectal Cancer** NICE NG151: Colorectal cancer
- 15 **Small Bowel Obstruction** NCEPOD Acute Bowel Obstruction report "delay in transit" 2020
- 16 **Abdominal Aortic Aneurysms** NICE NG156 Abdominal aortic aneurysm: diagnosis and management & ESC

#### General Practice

- 17 **Microcytic Anaemia** NICE NG12/ CKS Anaemia - Iron Deficiency
- 18 **Asthma** NICE NG180 Asthma Management
- 19 **Type 2 Diabetes (T2DM)** NICE NG28/ CKS T2DM/ Joint British Diabetes Societies Inpatient Group 2012/ BNF
- 20 **Migraine** NICE CG150: Headaches in over 12's: diagnosis and management

#### Dermatology

<b>Topic</b>	<b>Guideline</b>
21 <b>Skin Cancer</b>	NICE CKS 'Melanoma, British Association of Dermatologists (BAD)
<b>Medicine of the Elderly</b>	
22 <b>Confusion</b>	NICE CKS Delirium & Dementia
23 <b>Osteoporosis</b>	NICE CKS (Osteoporosis), UpToDate Osteomalacia/Osteoporosis
24 <b>End of Life Care symptoms</b>	NICE NG31/NG142
<b>Ophthalmology and ENT</b>	
25 <b>Diabetic Retinopathy</b>	Royal Society of Ophthalmologists (RSO), NICE NG82 (Macular Degeneration)
26 <b>Sudden Loss of Vision</b>	UpToDate: Central and branch retinal artery occlusion; Amaurosis Fugax
27 <b>Epistaxis</b>	NICE CKS, ENT UK, RCEM-HAP12
28 <b>Vertigo</b>	NICE CKS 'Vertigo', British Society of Otolaryngology (BSO)
29 <b>Tonsillitis</b>	NICE CKS 'Sore Throat', ENT UK
<b>Urology and Renal</b>	
30 <b>Urinary Retention</b>	NICE CG97, RCEM C3AP9
31 <b>Glomerulonephritis</b>	Kidney Disease Improving Global Outcome (KDIGO) 2012 Guidelines
32 <b>Testicular Pain</b>	NICE CKS - Scrotal pain and swelling
<b>Endocrinology</b>	
33 <b>Diabetic Ketoacidosis</b>	Joint British Diabetes Societies 2013, UpToDate,
34 <b>Hyponatraemia</b>	European Journal of Clinical Investigation (EJCI)
35 <b>Cushing's syndrome</b>	Cushing's syndrome BMJ Best Practice/ NICE CKS/ Endocrine Society Guidelines 2008
36 <b>Calcium Homeostasis</b>	UpToDate Aetiology of hypercalcaemia
<b>Haematology</b>	
37 <b>Leukaemia</b>	UpToDate Initial treatment of chronic myeloid leukaemia in chronic phase
38 <b>Haemophilia</b>	UpToDate Treatment of bleeding and preoperative management in haemophilia A and B
<b>Orthopaedics and Rheumatology</b>	
39 <b>Polyarthritis</b>	NICE NG100 Rheumatoid arthritis in adults: management
40 <b>Monoarthropathy</b>	BSR & BHPR guidelines for management of the hot swollen joint in adults
41 <b>Lower limb fracture</b>	British Orthopaedic Association (BOA)/NG37 - complex fractures
42 <b>Vasculitis</b>	UpToDate/European League Against Rheumatism (EULAR)
<b>Neurology and Neurosurgery</b>	
43 <b>Multiple Sclerosis</b>	NICE CG186 Multiple Sclerosis Management / UpToDate Multiple Sclerosis

	<b>Topic</b>	<b>Guideline</b>
44	<b>Wernicke's Encephalopathy</b>	NICE CG100: Alcohol Use Disorders; UpToDate Wernicke's Encephalopathy
45	<b>Spinal Cord Injury</b>	NICE NG41: Spinal Injury Assessment / UpToDate Anterior Spinal Artery Syndrome
46	<b>Intracranial Haemorrhage</b>	UpToDate Subdural Haematoma in Adults

## Emergency Medicine

47	<b>Anaphylaxis</b>	Resuscitation council UK
48	<b>Sepsis</b>	NICE NG51: Sepsis, NICE CG102: Meningitis
49	<b>Overdose</b>	NICE CKS: Poisoning or Overdose, TOXBASE
50	<b>Head Injury</b>	NICE CG176: Head injury assessment and early management
51	<b>Status Epilepticus</b>	NICE CG137, UpToDate: Evaluation and management of the first seizure in adults
52	<b>Hip Fractures</b>	NICE CG124 Hip Fracture Management
53	<b>Acute Renal Failure</b>	Kidney Disease - Improving Global Outcomes' (KDIGO) 2012 Guidelines

## Anasthetics

54	<b>Pain Management</b>	RCEM: Management of pain in adults; NICE: Neuropathic pain - pharmacological management
55	<b>Peri-operative Diabetes</b>	Association of Anaesthetists: Peri-operative management of the surgical patient with diabetes

## Infectious Disease and GUM

56	<b>HIV</b>	UpToDate/ BMJ Best Practice/ NICE CKS/BHIVA
57	<b>Genital ulcers</b>	BMJ Best Practice: Syphilis, Lymphogranuloma venereum
58	<b>Tuberculosis</b>	NICE NG33
59	<b>Infectious diarrhoea</b>	NICE CKS/ UpToDate Acute Gastroenteritis in Adult
60	<b>Fever in the returning traveller</b>	UpToDate Fever in the returning traveler/ Malaria: Clinical manifestations and diagnosis