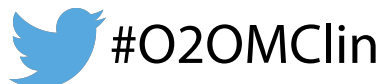


# Case presentation

A 37-year old female lawyer presents to A&E with  
**acute abdominal pain.**



# Case history

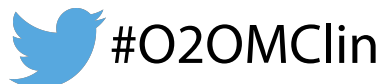
She has been unwell with a 'flu-like illness for a few days before the pain started. The pain is generalised but predominantly central and has gradually worsened over the last 24-hours.

# Case history

- PMHx: hypothyroidism, no surgery
- FHx: nil
- Drugs: levothyroxine, NKDA
- Social: independent, lives with family

# Differential diagnosis of abdominal pain

What examination findings  
would help?



# Case examination

- Lying in bed, moving with pain, pale, thin
- HR 126/min, RR 32/min, BP 98/55mmHg
- Abdomen generalised tenderness, not peritonitic, not distended, normal bowel sounds

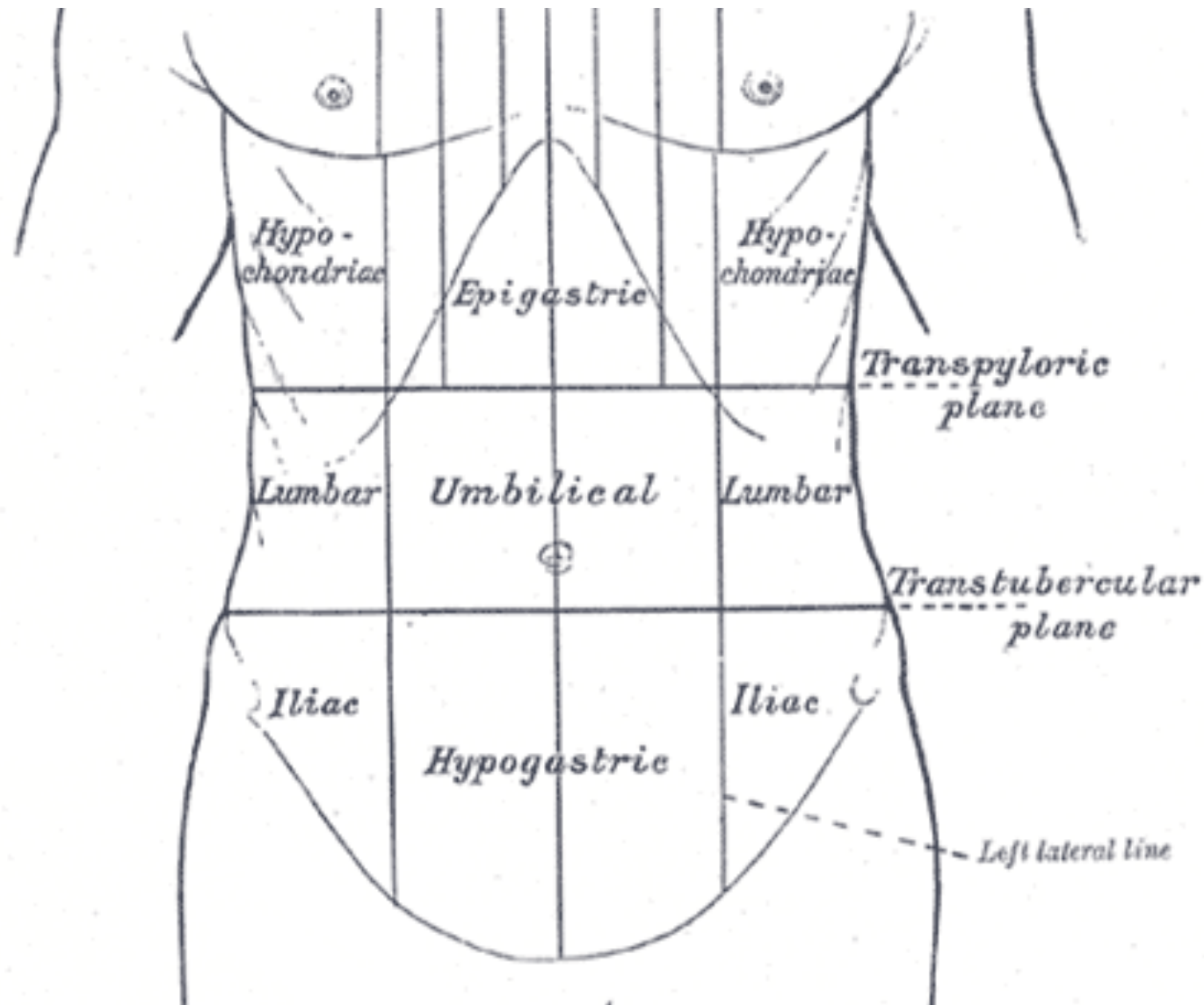
A 37-year old female lawyer presents to A&E with  
**acute abdominal pain.**

- She has been unwell with a 'flu-like illness for a few days before the pain started. The pain is generalised but predominantly central and has gradually worsened over the last 24-hours.
- PMHx: hypothyroidism, no surgery
- FHx: nil
- Drugs: levothyroxine, NKDA
- Social: independent, lives with family
- Lying in bed, moving with pain, pale, thin
- HR 126/min, RR 32/min, BP 98/55mmHg
- Abdomen generalised tenderness, not peritonitic, not distended, normal BS

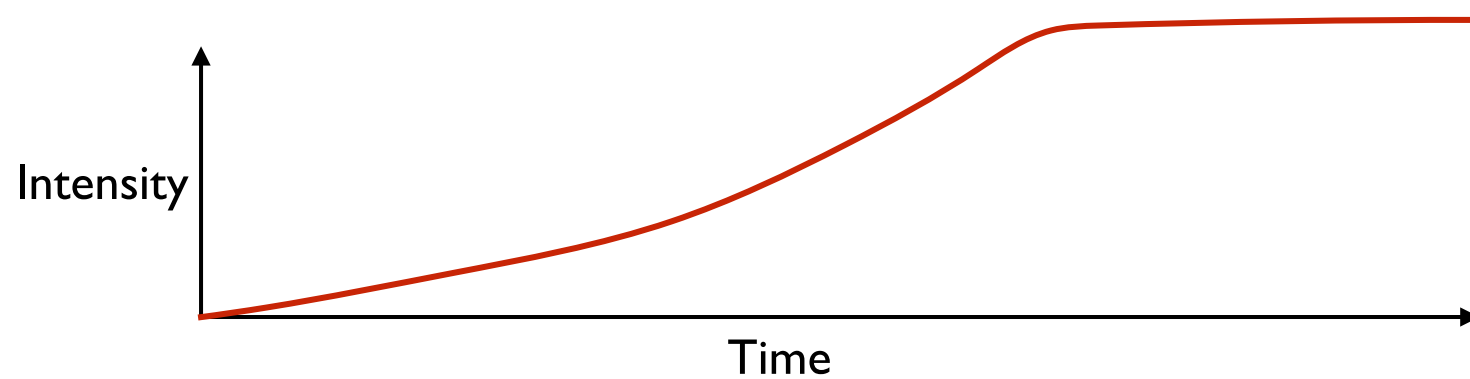
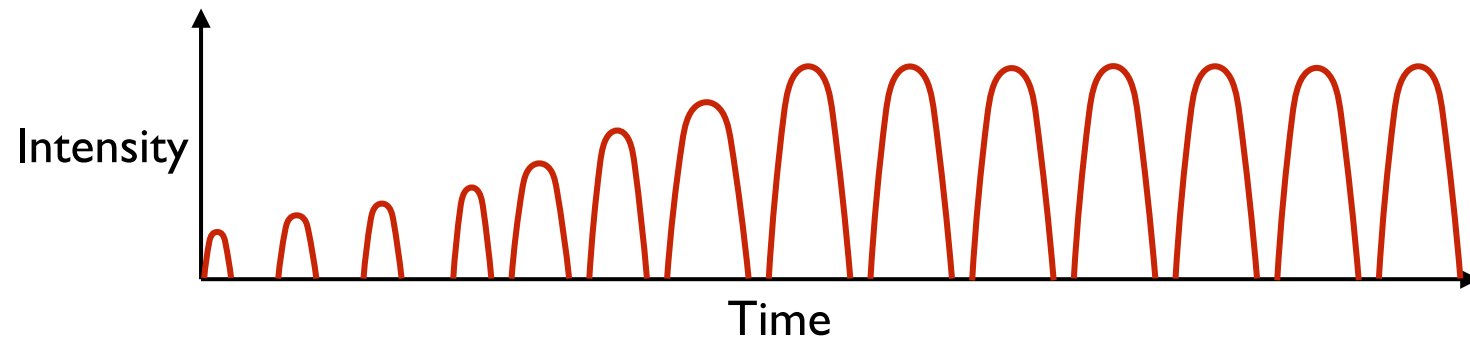
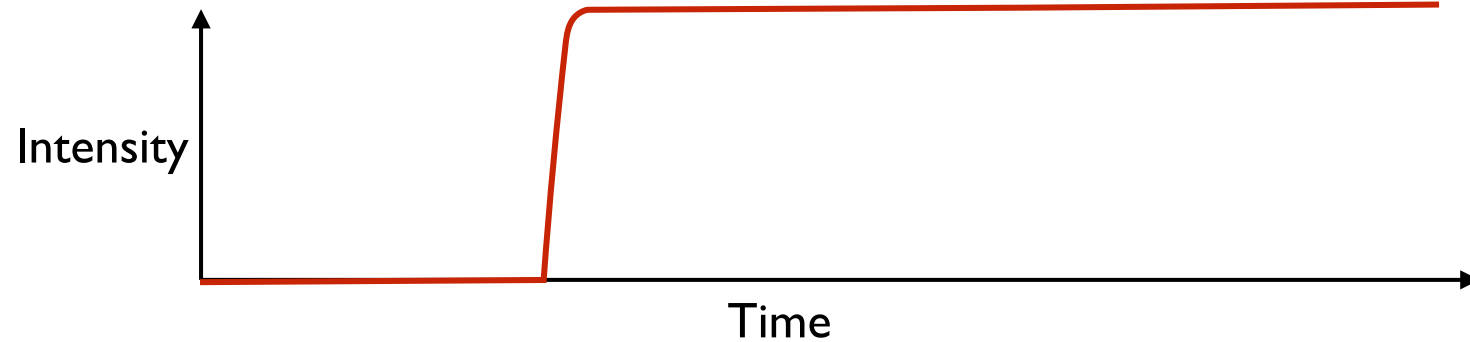


**Differential diagnosis?**

# Differential diagnosis

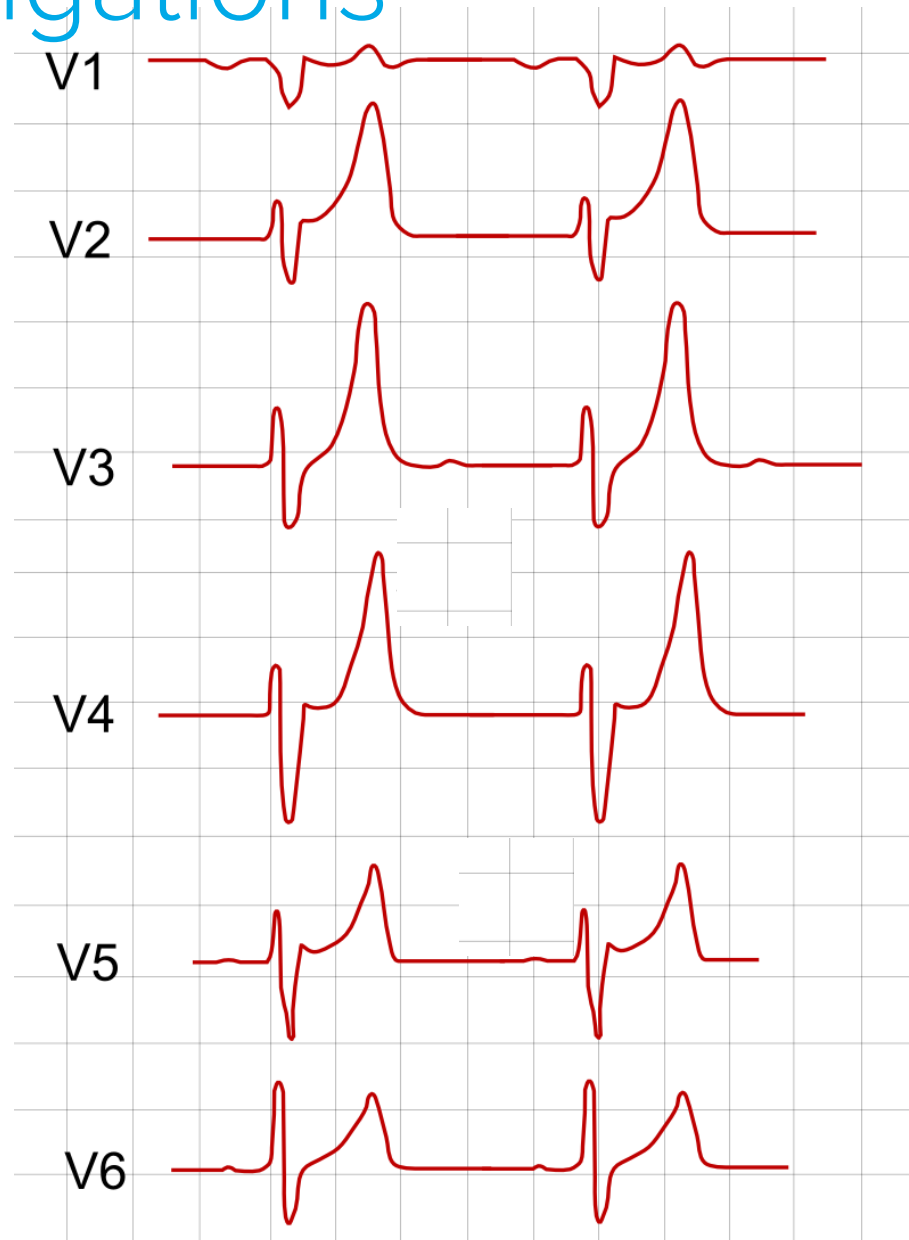



# Differential diagnosis





# Case investigations



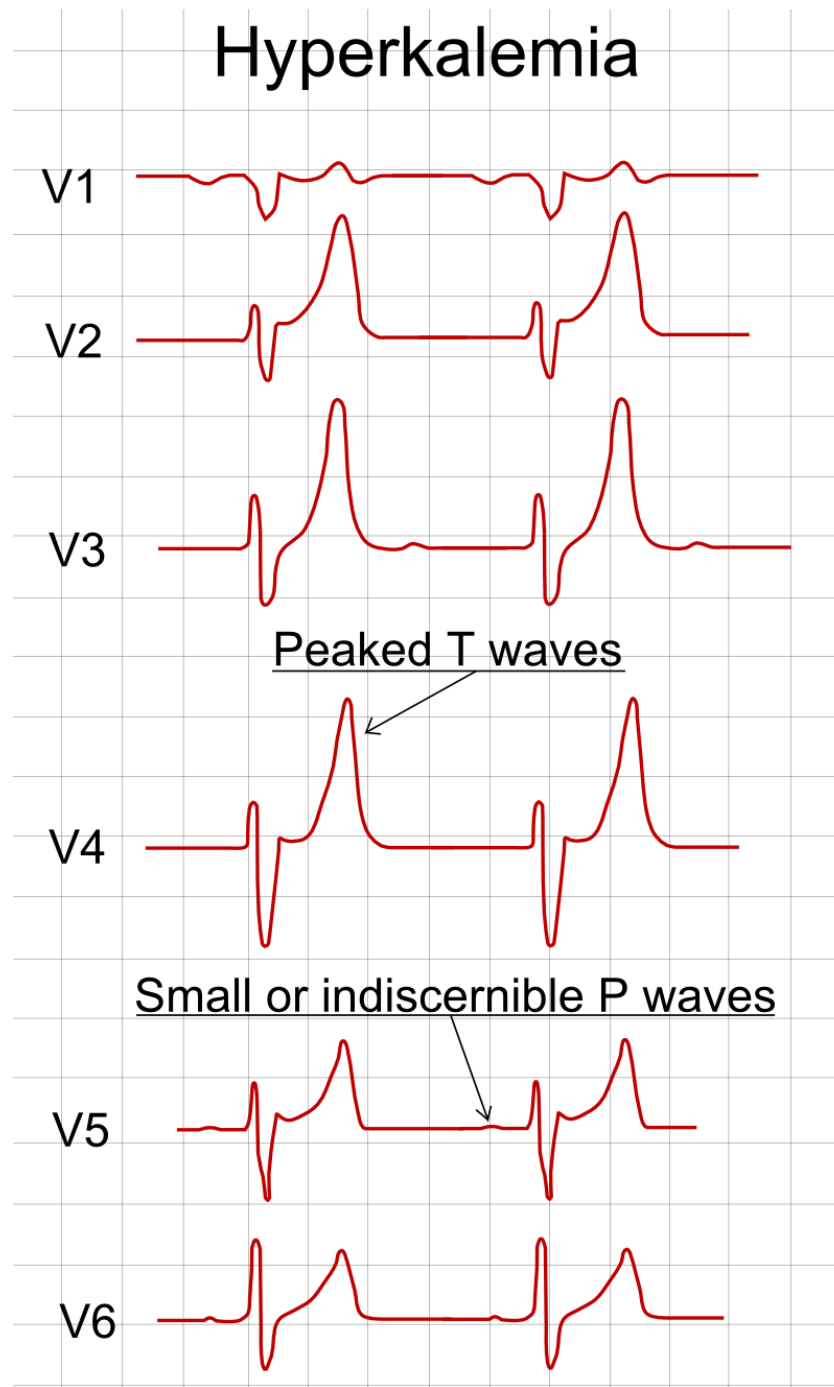
 #O2OMClin

# Arterial blood gas

(In air)

|                                    | <b>Result</b> | <b>Range</b>     |
|------------------------------------|---------------|------------------|
| <b>pH</b>                          | 7.27          | 7.35 - 7.45      |
| <b>CO<sub>2</sub></b>              | 3.2           | 4.8 - 6.1 kPa    |
| <b>O<sub>2</sub></b>               | 16.1          | 10.6 - 13.3 kPa  |
| <b>Hb</b>                          | 104           | 115 - 177 g/L    |
| <b>Na<sup>+</sup></b>              | 128           | 135 - 146 mmol/L |
| <b>K<sup>+</sup></b>               | 6.8           | 3.5 - 5.5 mmol/L |
| <b>Gluc</b>                        | 3.4           | 4.5 - 5.6 mmol/L |
| <b>Lact</b>                        | 2.6           | 0.6 - 2.4 mmol/L |
| <b>HCO<sub>3</sub><sup>-</sup></b> | 11.0          | 22 - 26 mmol/L   |
| <b>BE</b>                          | -8            | ±2               |

# Case investigations



# Case investigations

|                       | <b>Result</b> | <b>Range</b>                         |
|-----------------------|---------------|--------------------------------------|
| <b>Hb</b>             | 103           | 115 - 160 g/L                        |
| <b>MCV</b>            | 105           | 80 - 96 fL                           |
| <b>WCC</b>            | 6.1           | 4.0 - 11.0 cells x10 <sup>9</sup> /L |
| <b>Neut</b>           | 1.9           | 2.0 - 7.5 cells x10 <sup>9</sup> /L  |
| <b>Platelets</b>      | 378           | 150 - 400 cells x10 <sup>9</sup> /L  |
| <b>Na<sup>+</sup></b> | 128           | 135 - 146 mmol/L                     |
| <b>K<sup>+</sup></b>  | 6.9           | 3.5 - 5.5 mmol/L                     |
| <b>Urea</b>           | 22.2          | 2.5 - 6.7 mmol/L                     |
| <b>Creat</b>          | 172           | 79 - 118 µmol/L                      |
| <b>ALT</b>            | 36            | 3 - 40 IU/L                          |
| <b>ALP</b>            | 112           | 39 - 117 IU/L                        |
| <b>Bili</b>           | 15            | 1 - 17 µmol/L                        |
| <b>Amylase</b>        | 63            | 23 - 85 IU/L                         |
| <b>CRP</b>            | 21            | <5 mg/L                              |

**Urinary  $\beta$ -HCG:** negative

# Case investigations

|                | <b>Result</b> | <b>Range</b>     |
|----------------|---------------|------------------|
| <b>Glucose</b> | 3.3           | 4.5 - 5.6 mmol/L |
| <b>TSH</b>     | 3.8           | 0.2 - 4.5 mU/L   |

# Problem list

1. Abdominal pain
2. Shock
3. Hypoglycaemia
- 4. Hyperkalaemia**
5. Acute renal failure
6. Anaemia