

Finals Masterclass

Day 1: OSCE Masterclass

Day 2: MLA Masterclass - UK Best Practice SBAQs

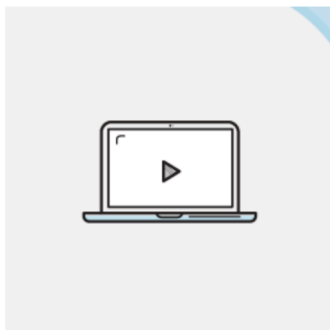
This is an online course. See p2 for OSCE stations & p3-5 for all Best Practice Guidelines.

Day 1: OSCE Masterclass

08:30 - 08:45	Registration
08:45 - 09:55	Cardiovascular
09:55 - 11:05	Abdominal (medical)
11:05 - 11:10	Sponsorship talk
11:15 - 12:15	Respiratory
	LUNCH BREAK
13:00 - 14:00	Neurological
14:05 - 15:15	General surgery
	BREAK
15:30 - 16:20	Joints & skin
16:20 - 17:30	Emergency management

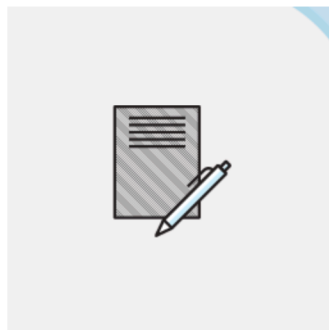
Day 2: MLA Masterclass

08:50 - 10:05	Cardiovascular and Resp
10:10 - 11:15	GI and Gen Surgery
11:25 - 12:30	GP, Derm, MoE, Palliative
	LUNCH BREAK
13:00 - 13:40	Ophthalmology and ENT
13:45 - 14:50	Renal, Urology, Endocrinology, Haem
15:00 - 16:10	Ortho, Rheum, Neuro, Neurosurg
	BREAK
16:20 - 17:30	EM, Anaesthetics, Pain
17:30 - 18:00	GUM, Infectious Disease



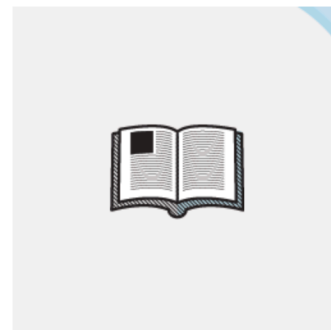
20h of online tutorials

Instant access which lasts for 1 year.
Rewind and re-watch as much as
you want



1100 Exam SBAs

Consolidate your knowledge with
hundreds of questions online



110 and 70-page Textbooks

Digestible and revision friendly
colour textbook posted directly to
you

Day 1: OSCE Stations Covered

Cardiovascular

- Aortic stenosis
- Aortic sclerosis
- Mitral regurgitation
- Valve replacement
- Congestive cardiac failure
- Coronary artery bypass grafting

Abdominal (Medical)

- Chronic liver disease ± transplant
- Hepato-/spleno-megaly
- Renal transplant
- Inflammatory bowel disease
- Reno-megaly

Respiratory

- Chronic obstructive pulmonary disease
- Pulmonary fibrosis
- Old tuberculosis
- Cystic fibrosis
- Bronchiectasis
- Pleural effusion

Neurological

- Post-stroke (hemiplegia)
- Parkinsonism
- Cerebellar syndrome
- Multiple sclerosis
- Facial nerve palsy
- Motor neurone disease

General Surgery

- Inguinal hernia
- Peripheral vascular (arterial) disease
- Goitre
- Incisional hernia
- Diabetic foot
- Chronic venous insufficiency

Joint and Skin

- Rheumatoid arthritis
- Psoriatic arthritis

Emergency Management

- Sepsis
- GI bleed
- anaphylaxis
- MI
- Respiratory failure

Day 2: MLA UK Best Practice Guidelines covered

Topic

Guideline

Cardiology

- 1 **Atrial Fibrillation** NICE CG196, NICE CKS - Oral Anticoagulation
- 2 **Chronic Heart Failure** NICE NG106 [2018], American Heart Association
- 3 **Acute Coronary Syndrome** NICE NG185
- 4 **Hypertension** NICE NG136

Respiratory

- 5 **Pneumothorax** BTS: Pleural Disease
- 6 **COPD & Pulmonary Hypertension** NICE NG115: COPD in over 16's: Diagnosis and Management
- 7 **Lung Cancer** NICE Guideline NG122, RCEM Hypercalcaemia
- 8 **Pulmonary Embolism** NICE NG 158, VTE diagnosis, treatment and thrombophilia testing

Gastroenterology

- 9 **Enteropathy** NICE NG20 Coeliac Disease: Recognition, Assessment and Management; UpToDate Coeliac
- 10 **Inflammatory Bowel Disease** NICE NG130: Ulcerative Colitis - Management; UpToDate: Ulcerative Colitis
- 11 **Decompensated Liver Disease** NICE CG100 - Management of Alcohol-Related Liver Disease; NICE CKS - Cirrhosis
- 12 **Hepatitis** UpToDate Hepatitis B, UpTo Date Hepatitis C, NICE CG165 and NICE CKS Hepatitis C

General Surgery

- 13 **Gallstones** NICE CG188 / BMJ Best Practice
- 14 **Colorectal Cancer** NICE NG151: Colorectal cancer
- 15 **Small Bowel Obstruction** NCEPOD Acute Bowel Obstruction report "delay in transit" 2020
- 16 **Abdominal Aortic Aneurysms** NICE NG156 Abdominal aortic aneurysm: diagnosis and management & ESC

General Practice

- 17 **Microcytic Anaemia** NICE NG12/ CKS Anaemia - Iron Deficiency
- 18 **Asthma** NICE NG80 Asthma Management
- 19 **Type 2 Diabetes (T2DM)** NICE NG28/ CKS T2DM/ Joint British Diabetes Societies Inpatient Group 2012/ BNF
- 20 **Migraine** NICE CG150: Headaches in over 12's: diagnosis and management

Dermatology

Topic	Guideline
21 Skin Cancer	NICE CKS 'Melanoma, British Association of Dermatologists (BAD)
Medicine of the Elderly	
22 Confusion	NICE CKS Delirium & Dementia
23 Osteoporosis	NICE CKS (Osteoporosis), UpToDate Osteomalacia/Osteoporosis
24 End of Life Care symptoms	NICE NG31/NG142
Ophthalmology and ENT	
25 Diabetic Retinopathy	Royal Society of Ophthalmologists (RSO), NICE NG82 (Macular Degeneration)
26 Sudden Loss of Vision	UpToDate: Central and branch retinal artery occlusion; Amaurosis Fugax
27 Epistaxis	NICE CKS, ENT UK, RCEM-HAP12
28 Vertigo	NICE CKS 'Vertigo', British Society of Otolaryngology (BSO)
29 Tonsillitis	NICE CKS 'Sore Throat', ENT UK
Urology and Renal	
30 Urinary Retention	NICE CG97, RCEM C3AP9
31 Glomerulonephritis	Kidney Disease Improving Global Outcome (KDIGO) 2012 Guidelines
32 Testicular Pain	NICE CKS - Scrotal pain and swelling
Endocrinology	
33 Diabetic Ketoacidosis	Joint British Diabetes Societies 2013, UpToDate,
34 Hyponatraemia	European Journal of Clinical Investigation (EJCI)
35 Cushing's syndrome	Cushing's syndrome BMJ Best Practice/ NICE CKS/ Endocrine Society Guidelines 2008
36 Calcium Homeostasis	UpToDate Aetiology of hypercalcaemia
Haematology	
37 Leukaemia	UpToDate Initial treatment of chronic myeloid leukaemia in chronic phase
38 Haemophilia	UpToDate Treatment of bleeding and preoperative management in haemophilia A and B
Orthopaedics and Rheumatology	
39 Polyarthritis	NICE NG100 Rheumatoid arthritis in adults: management
40 Monoarthropathy	BSR & BHPR guidelines for management of the hot swollen joint in adults
41 Lower limb fracture	British Orthopaedic Association (BOA)/NG37 - complex fractures
42 Vasculitis	UpToDate/European League Against Rheumatism (EULAR)
Neurology and Neurosurgery	
43 Multiple Sclerosis	NICE CG186 Multiple Sclerosis Management / UpToDate Multiple Sclerosis

Topic	Guideline
44 Wernicke's Encephalopathy	NICE CG100: Alcohol Use Disorders; UpToDate Wernicke's Encephalopathy
45 Spinal Cord Injury	NICE NG41: Spinal Injury Assessment / UpToDate Anterior Spinal Artery Syndrome
46 Intracranial Haemorrhage	UpToDate Subdural Haematoma in Adults

Emergency Medicine

47 Anaphylaxis	Resuscitation council UK
48 Sepsis	NICE NG51: Sepsis, NICE CG102: Meningitis
49 Overdose	NICE CKS: Poisoning or Overdose, TOXBASE
50 Head Injury	NICE CG176: Head injury assessment and early management
51 Status Epilepticus	NICE CG137, UpToDate: Evaluation and management of the first seizure in adults
52 Hip Fractures	NICE CG124 Hip Fracture Management
53 Acute Renal Failure	Kidney Disease - Improving Global Outcomes' (KDIGO) 2012 Guidelines

Anasthetics

54 Pain Management	RCEM: Management of pain in adults; NICE: Neuropathic pain - pharmacological management
55 Peri-operative Diabetes	Association of Anaesthetists: Peri-operative management of the surgical patient with diabetes

Infectious Disease and GUM

56 HIV	UpToDate/ BMJ Best Practice/ NICE CKS/BHIVA
57 Genital ulcers	BMJ Best Practice: Syphilis, Lymphogranuloma venereum
58 Tuberculosis	NICE NG33
59 Infectious diarrhoea	NICE CKS/ UpToDate Acute Gastroenteritis in Adult
60 Fever in the returning traveller	UpToDate Fever in the returning traveler/ Malaria: Clinical manifestations and diagnosis