

Finals Masterclass

Day 1: OSCE Masterclass

Day 2: UK Best Practice SBA Masterclass

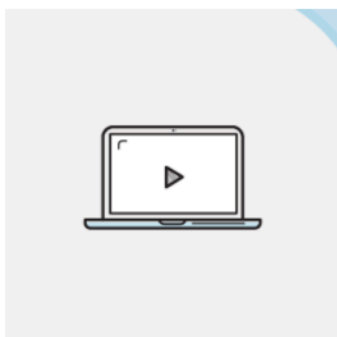
This is an online course. See p2 for OSCE stations & p3-5 for all Clinical Guidelines covered.

Day 1: OSCE Masterclass

08:30 - 08:45	Registration
08:45 - 09:55	Cardiovascular
09:55 - 11:05	Abdominal (medical)
11:05 - 12:00	Respiratory
	LUNCH BREAK
12:45 - 13:40	Neurological
13:40 - 14:50	General surgery
	BREAK
15:00 - 15:55	Joints & skin
15:55 - 17:00	Emergency management

Day 2: SBA Masterclass

09:00 - 09:50	Cardiovascular and Resp
10:00 - 10:50	GI and Gen Surgery
11:00 - 11:50	GP, Derm, MoE, Palliative
12:00 - 12:30	Ophthalmology and ENT
	LUNCH BREAK
13:10 - 14:00	Renal, Urology, Endocrinology, Haem
14:10 - 15:00	Ortho, Rheum, Neuro, Neurosurg
	BREAK
15:30 - 16:20	EM, Anaesthetics, Pain
16:30 - 17:00	GUM, Infectious Disease



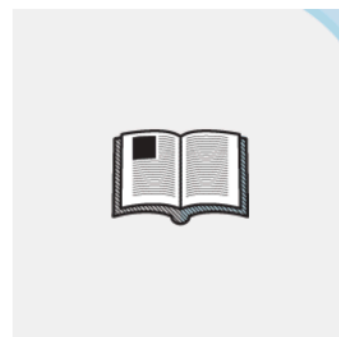
20h of online tutorials

1yr access to Rewind and Re-watch



1100 Exam SBAs

Consolidate your knowledge with hundreds of questions online



**110 and 70-page
Textbooks**

Digestible and revision friendly colour textbook posted directly to you

Day 1: OSCE Stations Covered

Cardiovascular

- Aortic stenosis
- Aortic sclerosis
- Mitral regurgitation
- Valve replacement
- Congestive cardiac failure
- Coronary artery bypass grafting

Abdominal (Medical)

- Chronic liver disease ± transplant
- Hepato-/spleno-megaly
- Renal transplant
- Inflammatory bowel disease
- Reno-megaly

Respiratory

- Chronic obstructive pulmonary disease
- Pulmonary fibrosis
- Old tuberculosis
- Cystic fibrosis
- Bronchiectasis
- Pleural effusion

Neurological

- Post-stroke (hemiplegia)
- Parkinsonism
- Cerebellar syndrome
- Multiple sclerosis
- Facial nerve palsy
- Motor neurone disease

General Surgery

- Inguinal hernia
- Peripheral vascular (arterial) disease
- Goitre
- Incisional hernia
- Diabetic foot
- Chronic venous insufficiency

Joint and Skin

- Rheumatoid arthritis
- Psoriatic arthritis

Emergency Management

- Sepsis
- GI bleed
- anaphylaxis
- MI
- Respiratory failure

Day 2: UK Best Practice + SBA Guidelines covered

Topic

Guideline

Cardiology

- 1 **Atrial Fibrillation** NICE CG180, NICE CKS - Oral Anticoagulation
- 2 **Chronic Heart Failure** NICE NG106 [2018], American Heart Association
- 3 **Acute Coronary Syndrome** NICE CG94/ CG167
- 4 **Hypertension** NICE NG136

Respiratory

- 5 **Pneumothorax** BTS: Pleural Disease
- 6 **COPD & Pulmonary Hypertension** NICE NG115: COPD in over 16's: Diagnosis and Management
- 7 **Lung Cancer** NICE Guideline NG122, RCEM Hypercalcaemia
- 8 **Pulmonary Embolism** NICE NG 158, VTE diagnosis, treatment and thrombophilia testing

Gastroenterology

- 9 **Enteropathy** NICE NG20 Coeliac Disease: Recognition, Assessment and Management; UpToDate Coeliac
- 10 **Inflammatory Bowel Disease** NICE NG130: Ulcerative Colitis - Management; UpToDate: Ulcerative Colitis
- 11 **Decompensated Liver Disease** NICE CG100 - Management of Alcohol-Related Liver Disease; NICE CKS - Cirrhosis
- 12 **Hepatitis** UpToDate Hepatitis B, UpTo Date Hepatitis C, NICE CG165 and NICE CKS Hepatitis C

General Surgery

- 13 **Gallstones** NICE CG188 / BMJ Best Practice
- 14 **Colorectal Cancer** NICE NG151: Colorectal cancer
- 15 **Small Bowel Obstruction** NCEPOD Acute Bowel Obstruction report "delay in transit" 2020
- 16 **Abdominal Aortic Aneurysms** NICE NG156 Abdominal aortic aneurysm: diagnosis and management & ESC

General Practice

- 17 **Microcytic Anaemia** NICE NG12/ CKS Anaemia - Iron Deficiency
- 18 **Asthma** NICE NG180 Asthma Management
- 19 **Type 2 Diabetes (T2DM)** NICE NG28/ CKS T2DM/ Joint British Diabetes Societies Inpatient Group 2012/ BNF
- 20 **Migraine** NICE CG150: Headaches in over 12's: diagnosis and management

Dermatology

Topic	Guideline
21 Skin Cancer	NICE CKS 'Melanoma, British Association of Dermatologists (BAD)
Medicine of the Elderly	
22 Confusion	NICE CKS Delirium & Dementia
23 Osteoporosis	NICE CKS (Osteoporosis), UpToDate Osteomalacia/Osteoporosis
24 End of Life Care symptoms	NICE NG31/NG142
Ophthalmology and ENT	
25 Diabetic Retinopathy	Royal Society of Ophthalmologists (RSO), NICE NG82 (Macular Degeneration)
26 Sudden Loss of Vision	UpToDate: Central and branch retinal artery occlusion; Amaurosis Fugax
27 Epistaxis	NICE CKS, ENT UK, RCEM-HAP12
28 Vertigo	NICE CKS 'Vertigo', British Society of Otolaryngology (BSO)
29 Tonsillitis	NICE CKS 'Sore Throat', ENT UK
Urology and Renal	
30 Urinary Retention	NICE CG97, RCEM C3AP9
31 Glomerulonephritis	Kidney Disease Improving Global Outcome (KDIGO) 2012 Guidelines
32 Testicular Pain	NICE CKS - Scrotal pain and swelling
Endocrinology	
33 Diabetic Ketoacidosis	Joint British Diabetes Societies 2013, UpToDate,
34 Hyponatraemia	European Journal of Clinical Investigation (EJCI)
35 Cushing's syndrome	Cushing's syndrome BMJ Best Practice/ NICE CKS/ Endocrine Society Guidelines 2008
36 Calcium Homeostasis	UpToDate Aetiology of hypercalcaemia
Haematology	
37 Leukaemia	UpToDate Initial treatment of chronic myeloid leukaemia in chronic phase
38 Haemophilia	UpToDate Treatment of bleeding and preoperative management in haemophilia A and B
Orthopaedics and Rheumatology	
39 Polyarthritis	NICE NG100 Rheumatoid arthritis in adults: management
40 Monoarthropathy	BSR & BHPR guidelines for management of the hot swollen joint in adults
41 Lower limb fracture	British Orthopaedic Association (BOA)/NG37 - complex fractures
42 Vasculitis	UpToDate/European League Against Rheumatism (EULAR)
Neurology and Neurosurgery	
43 Multiple Sclerosis	NICE CG186 Multiple Sclerosis Management / UpToDate Multiple Sclerosis

Topic

Guideline

- 44 **Wernicke's Encephalopathy** NICE CG100: Alcohol Use Disorders; UpToDate Wernicke's Encephalopathy
- 45 **Spinal Cord Injury** NICE NG41: Spinal Injury Assessment / UpToDate Anterior Spinal Artery Syndrome
- 46 **Intracranial Haemorrhage** UpToDate Subdural Haematoma in Adults

Emergency Medicine

- 47 **Anaphylaxis** Resuscitation council UK
- 48 **Sepsis** NICE NG51: Sepsis, NICE CG102: Meningitis
- 49 **Overdose** NICE CKS: Poisoning or Overdose, TOXBASE
- 50 **Head Injury** NICE CG176: Head injury assessment and early management
- 51 **Status Epilepticus** NICE CG137, UpToDate: Evaluation and management of the first seizure in adults
- 52 **Hip Fractures** NICE CG124 Hip Fracture Management
- 53 **Acute Renal Failure** Kidney Disease - Improving Global Outcomes' (KDIGO) 2012 Guidelines

Anasthetics

- 54 **Pain Management** RCEM: Management of pain in adults; NICE: Neuropathic pain - pharmacological management
- 55 **Peri-operative Diabetes** Association of Anaesthetists: Peri-operative management of the surgical patient with diabetes

Infectious Disease and GUM

- 56 **HIV** UpToDate/ BMJ Best Practice/ NICE CKS/BHIVA
- 57 **Genital ulcers** BMJ Best Practice: Syphilis, Lymphogranuloma venereum
- 58 **Tuberculosis** NICE NG33
- 59 **Infectious diarrhoea** NICE CKS/ UpToDate Acute Gastroenteritis in Adult
- 60 **Fever in the returning traveller** UpToDate Fever in the returning traveler/ Malaria: Clinical manifestations and diagnosis